

# FUSSEN

## Specifications **Intraoral Sensor**

Active Area	Dimensions
Size1= 20X30mm	Size1:25.4×36.8×4.5mm
Size2= 26X36mm	Size2:30.4×41.9×4.5mm
Resolution	Pixel Size
1200X1650	20*20μm
Detector	Gray Scale
CMOS APS	14bit
Cable Length	True Resolution
2.7m	20 PL/mm

## Intraoral Sensor



### Fussen Technology Co.,Ltd

📍 1F,3#Building ,Tongfuyu Industrial Zone, Taoyuan Street,Nanshan District, Shenzhen,China

☎ Tel:+86 755 2167 0890 - 813

🌐 Website: [www.fussengroup.com](http://www.fussengroup.com)

✉ Email:[sales@fussenct.com](mailto:sales@fussenct.com)



### Easy to use

Special connection, easy to use,  
positioning precisely when biting, to get the image easily



### Ergonomics

Rounded Corner & Curved



### edge

Ultra-slim: 4.4 mm

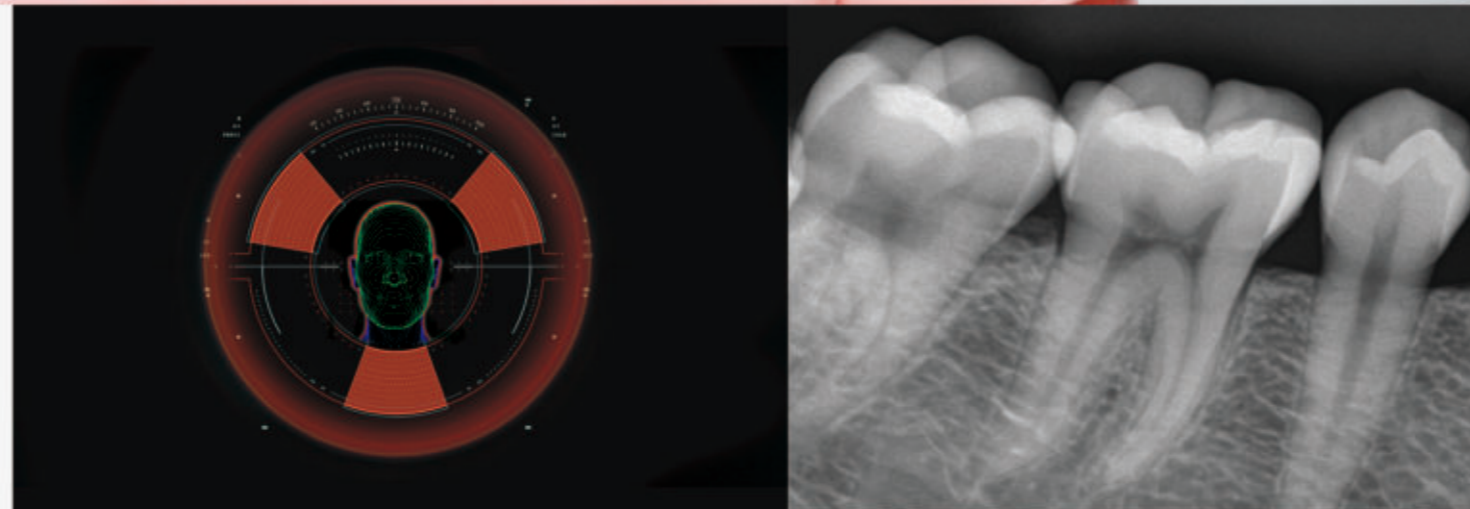
### Performance

AED Technology

- Compatible with almost all DC and AC X-ray generator

CSI Technology

- Less dosis with more resolution



### Durability

- Anti-drop 1.5 m
- 80,000 Bending test
- 60,000 times exposure without image quality lose
- IP 68