



SHINING 3D®

AutoScan-DS-EX

Go Digital Beyond Limitations



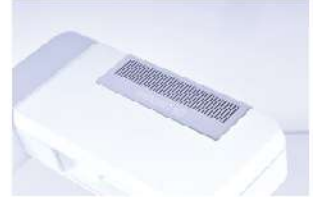
The AutoScan-DS-EX is specifically developed for the dental market. It adopts the latest structured light scanning technology to provide accurate and efficient solutions for those who focus on productivity and cost-effectiveness.

The AutoScan-DS-EX 3D scanner provides an optimal data post-processing option through LAN network, and a revolutionary structure that allows easy upgrades for the foreseeable future. It is your ideal digital lab companion.

AutoScan-DS-EX scanner can be applied to different levels of dental laboratories, dental vocational colleges, dental clinics, etc. Its intuitive design and automatic workflow brings incredible benefits to dental labs and vocational education centers of dental technology.

Modular Structure

The AutoScan-DS-EX scanner consists of detachable modules, which make possible future functional upgrades, for when customers require higher performance and functionalities.



Multiple Functions Available

Articulator scanning: support the scanning of most articulators available in the market, such as Artex, KAVO, SAM, etc.



Triple-tray scanning: more convenient triple-tray impression scanning with optimized jig.

Texture scanning: marks on dental models can be captured clearly, providing reference for further design work.



Continuous Scanning Mode Available

By using a LAN network connection, scanning and data processing can be now carried out on separate computers. This new function will dramatically take the work efficiency to another level.

Fully Open Structure, Unimaginable Compact Size

- Unprecedented open structure, easier for cleaning and model set up.
- Unmatched small size with an ideal footprint for office use.
- Overall weight of 5 kg, portable for ease of transportation.
- Innovative quick release jig, convenient for model set up.
- This new design will further improve the work efficiency and convenience.

Clinic Mode Added

With the clinic mode, desktop 3D scanner can be applied to dental clinics directly to support chair-side restoration solutions.

Open Data Format

Export STL data, high compatibility with current open CAD/CAM software and hardware in the market.

Specification

Model	AutoScan-DS-EX
Camera resolution	1,300,000
Accuracy	< 15 μm
Scanning Range	100 mm * 100 mm * 75 mm
Scanning Time	bite: 18 s upper / lower jaw: 42 s 1-8 dies: 42 s impression: 90 s
Scanning Principle	structured light 3D scanning
Temperature	10 °C to 30 °C (higher temperature will affect the scanning result)
Dimension	260 mm * 270 mm * 420 mm
Weight	5 kg
Output Format	STL, OBJ
Interface	USB 3.0
Power	AC 24 V